

Live Area: 23”w x 95.48”h  
 with 0.5” bleed TOP  
 0.75” bleed SIDES  
 Finished Size: 24.25”w x 96”h

Sew hook Velcro into front  
 perimeter of graphic

Live Area: 69”w x 95.48”h  
 with 0.5” bleed around perimeter  
 Finished Size: 70.25”w x 96”h

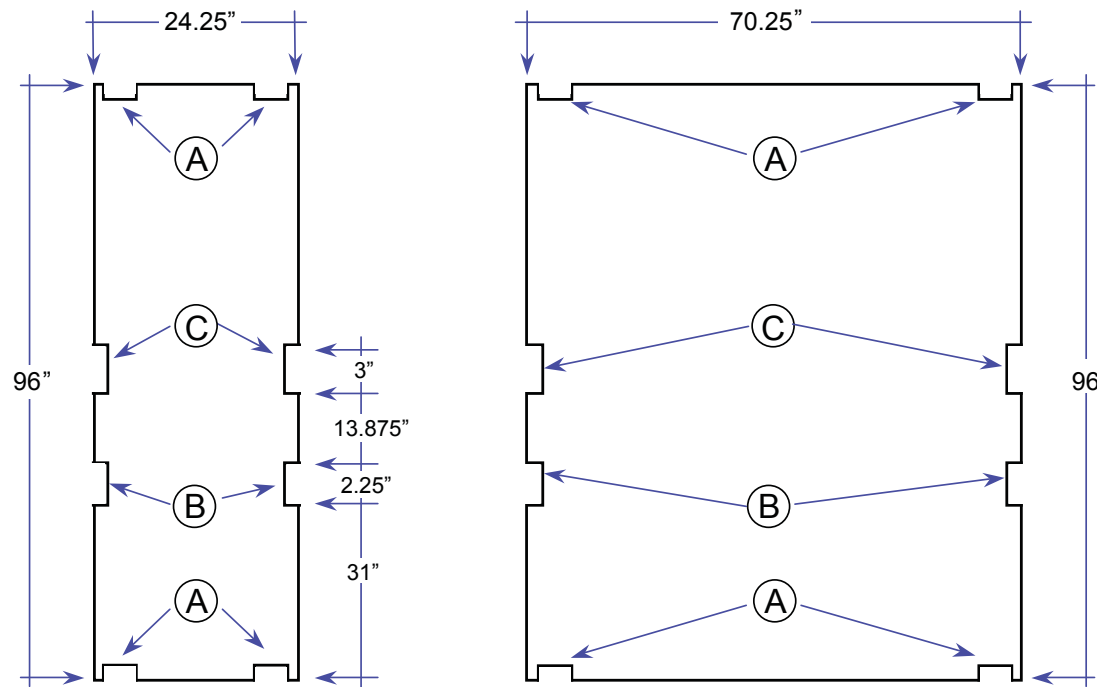
Sew hook Velcro into front  
 perimeter of graphic



**NOTE:** These dimensions are  
 for graphic layout purposes.  
 Graphic needs to be cut and  
 test fitted to frame.

**NOTE:** Graphic files must be  
 @ 150 dpi Finished Size. **DO  
 NOT** send Flattened Files.  
 Production can not manipu-  
 late the content, proportion  
 or color of these files.

Example of PRINT/CUT SIZES:



Finishing

Sew 1/2" Velcro to front perimeter of graphic

A - The 4 corner notches are cut 1/2" in from the edge and 1/4"h x 3/4"w

B - For the side notches - measure 31" up from the bottom of the graphic.

Notch is 2.25"h x 0.25"w.

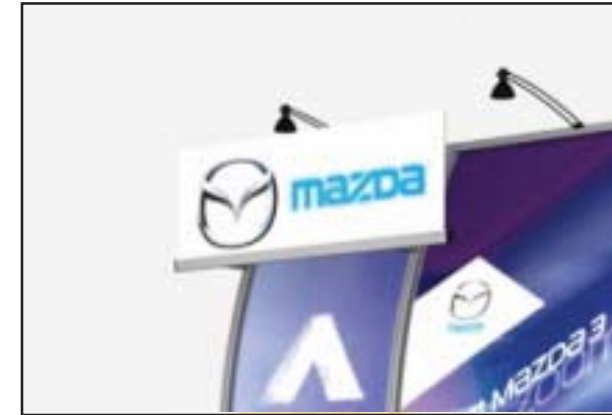
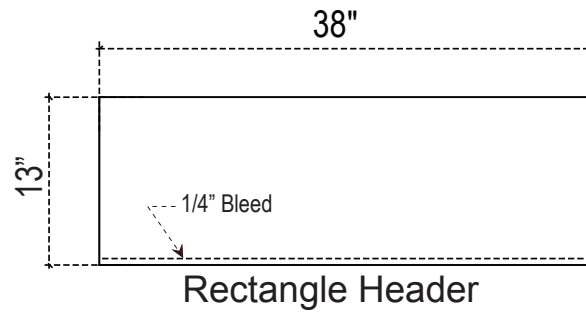
C - Measure up an additional 13.875" from the top edge of the first notch.

Notch is 3"h x 0.25"w

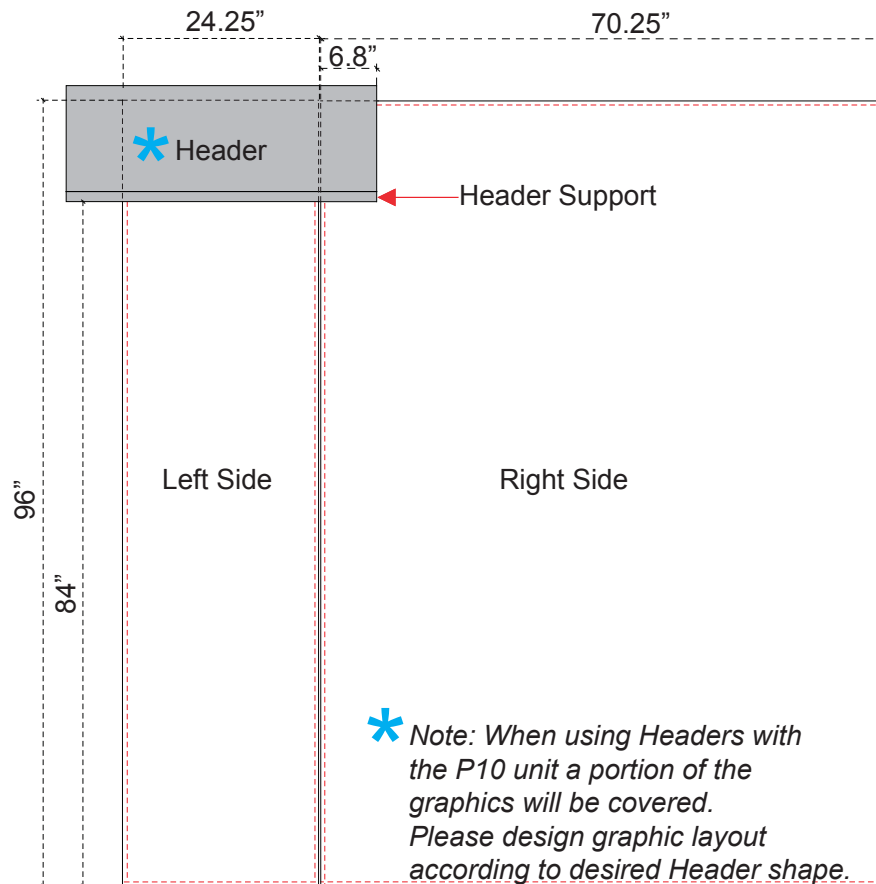


**NOTE:** These dimensions are for graphic layout purposes. Graphic needs to be cut and test fitted to frame.

**NOTE:** Graphic files must be @ 150 dpi Finished Size. **DO NOT** send Flattened Files. Production can not manipulate the content, proportion or color of these files.



Examples of P10 Backwall Left Side Graphic Dims with Headers

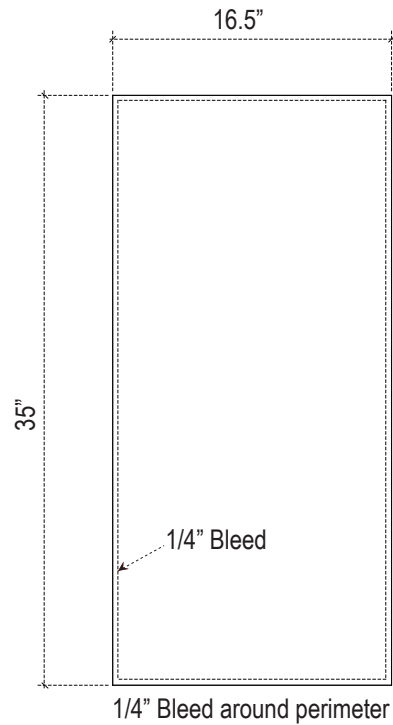


NOTE: These dimensions are for graphic layout purposes. Graphic needs to be cut and test fitted to frame.

NOTE: Graphic files must be @ 150 dpi Finished Size. DO NOT send Flattened Files. Production can not manipulate the content, proportion or color of these files.

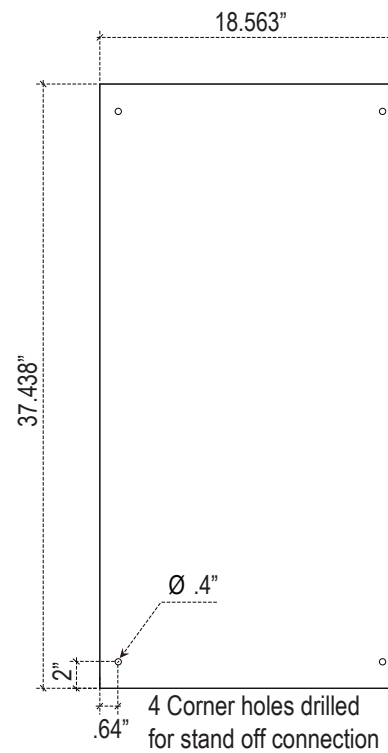
P10 Workstation Slide in Front Panel Graphic Dims

Print on 1/16" Substrate



P10 Workstation Stand off Front Panel Graphic Dims

Print on 1/16" Substrate



**NOTE:** These dimensions are for graphic layout purposes. Graphic needs to be cut and test fitted to frame.

**NOTE:** Graphic files must be @ 150 dpi Finished Size. **DO NOT** send Flattened Files. Production can not manipulate the content, proportion or color of these files.